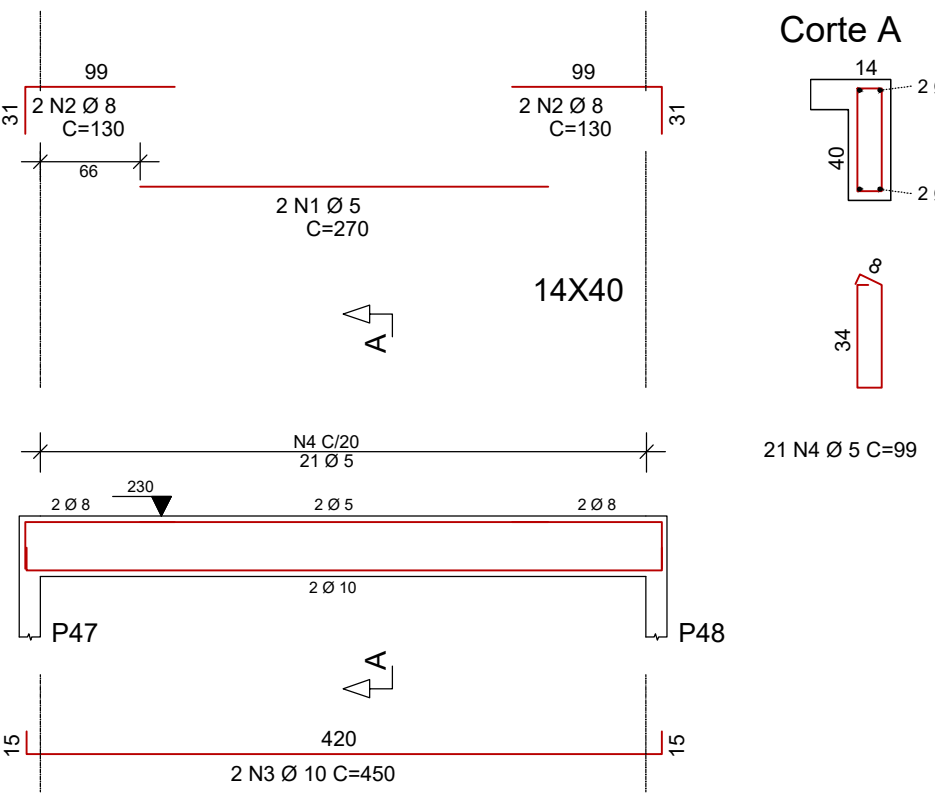
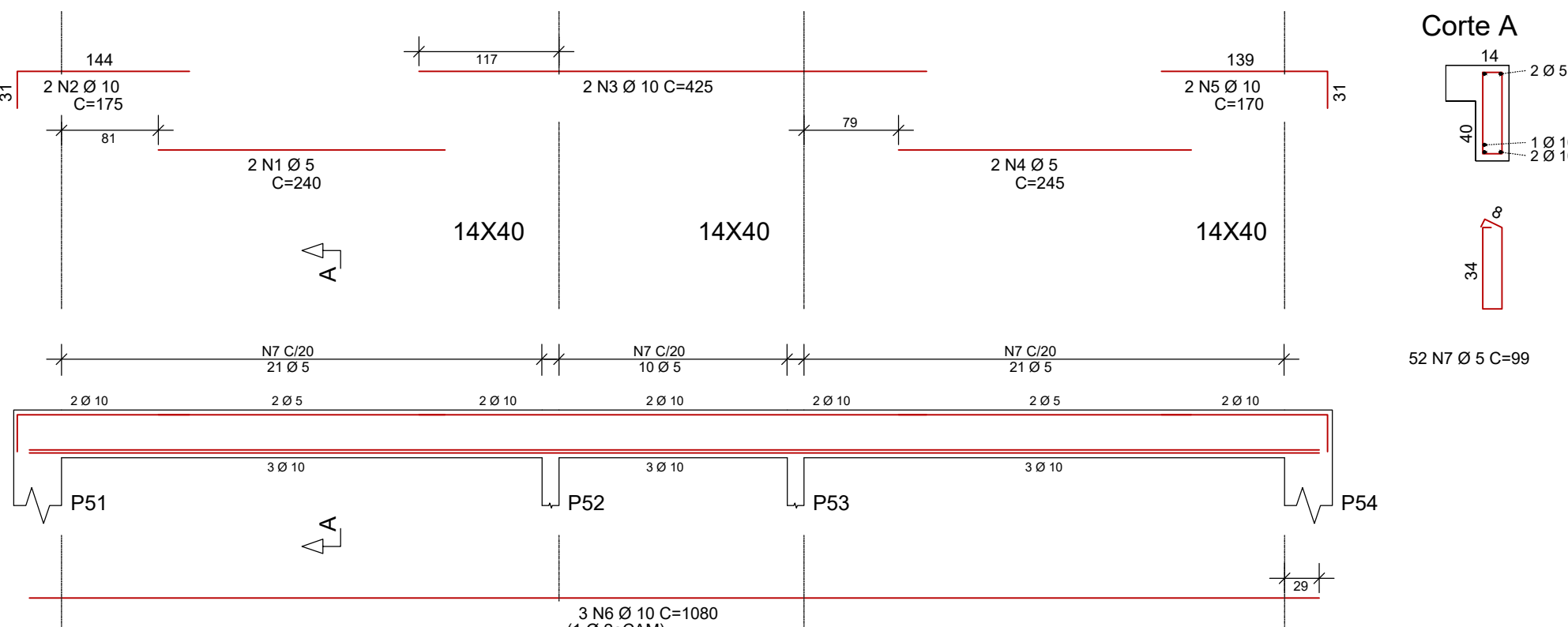


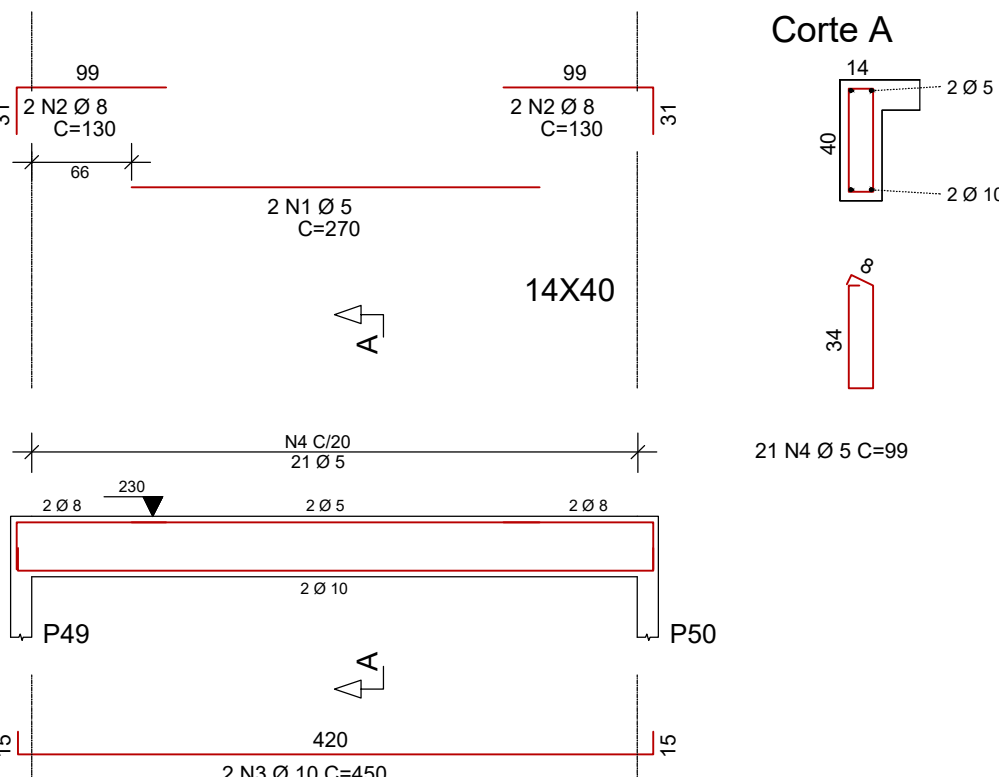
V208



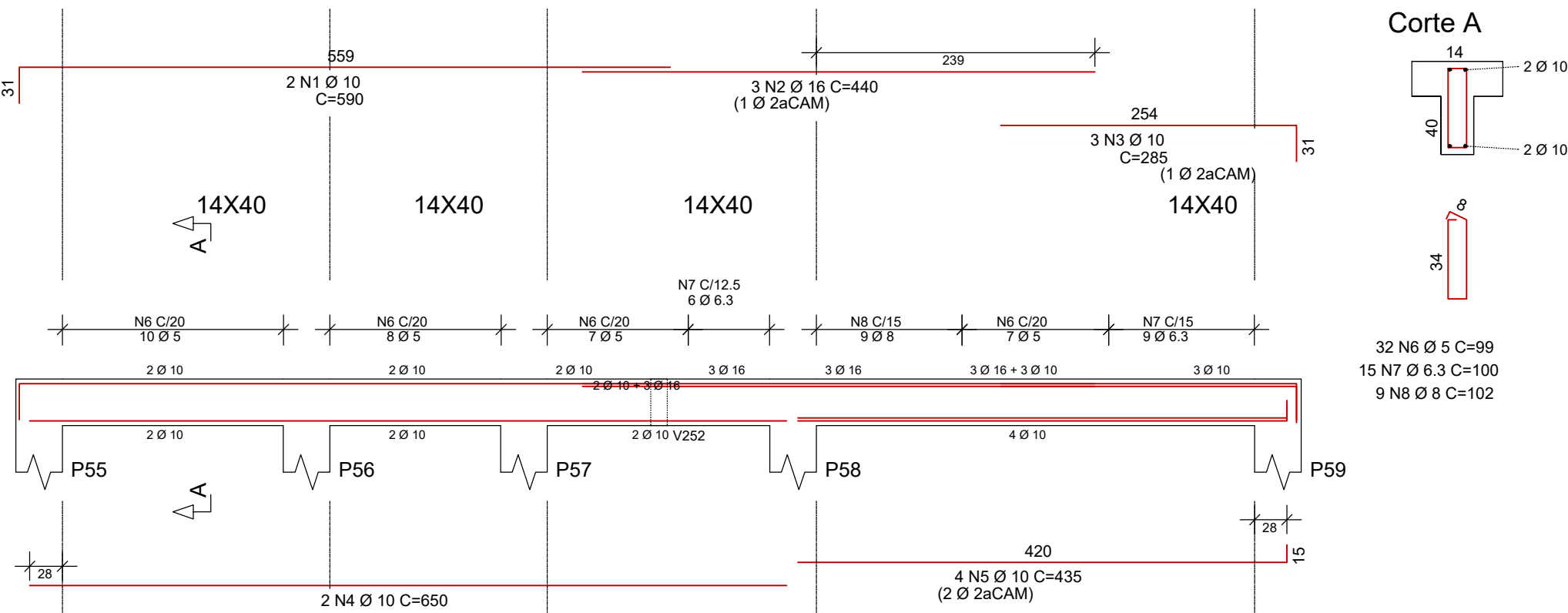
V209



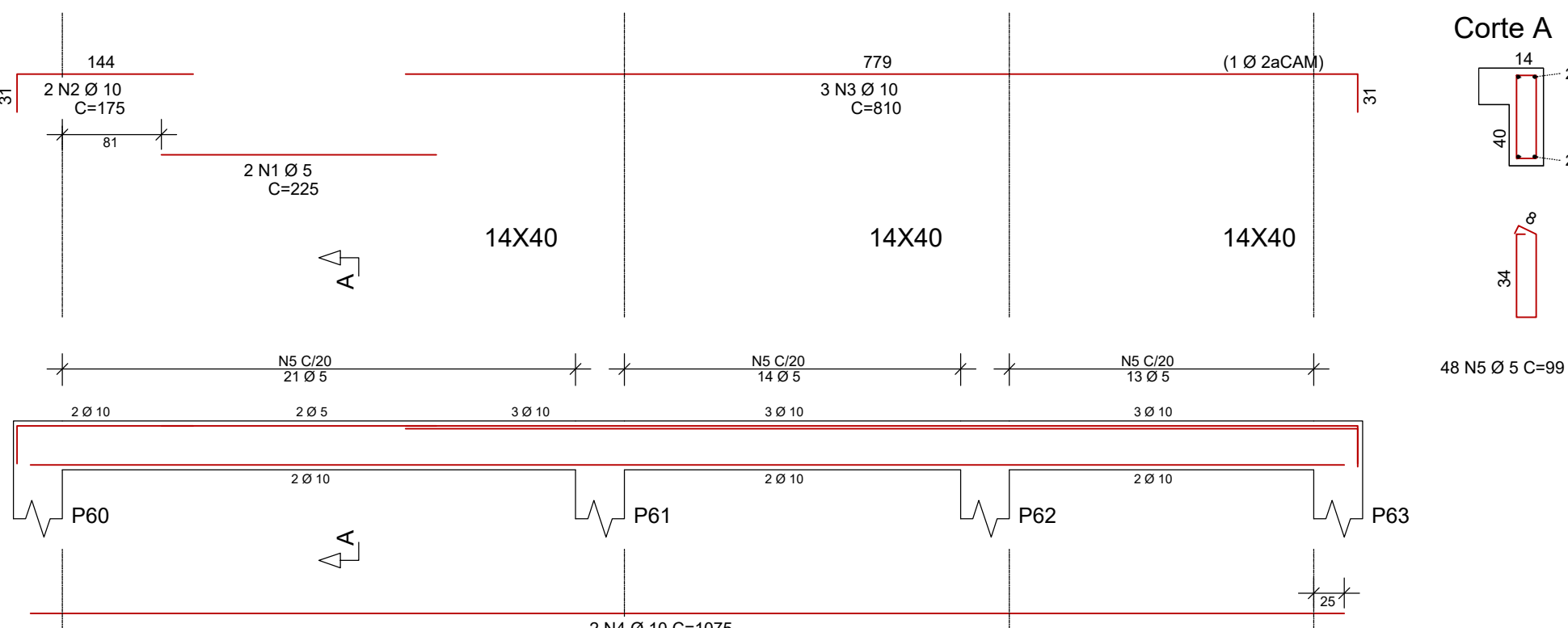
V210



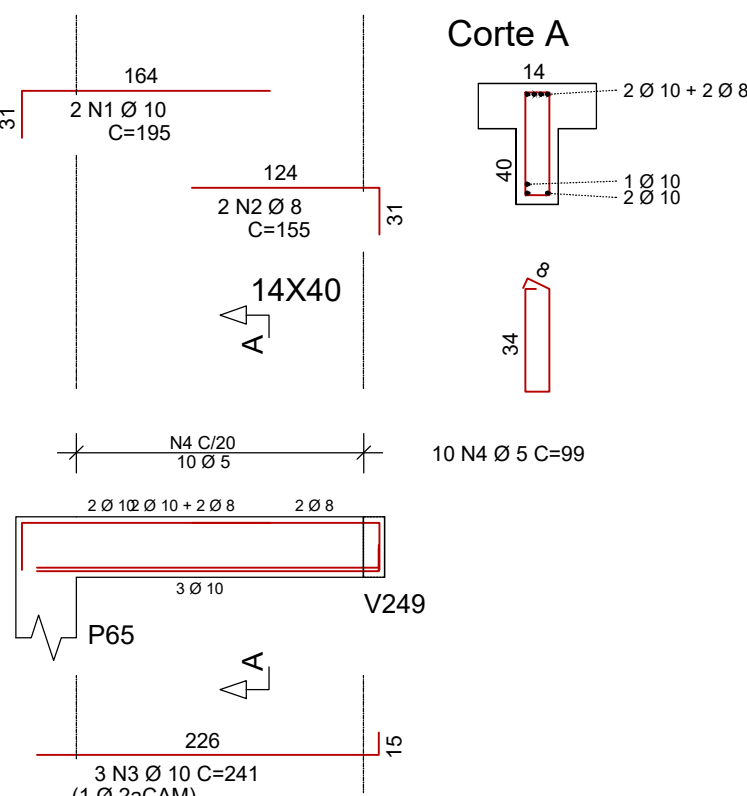
V211



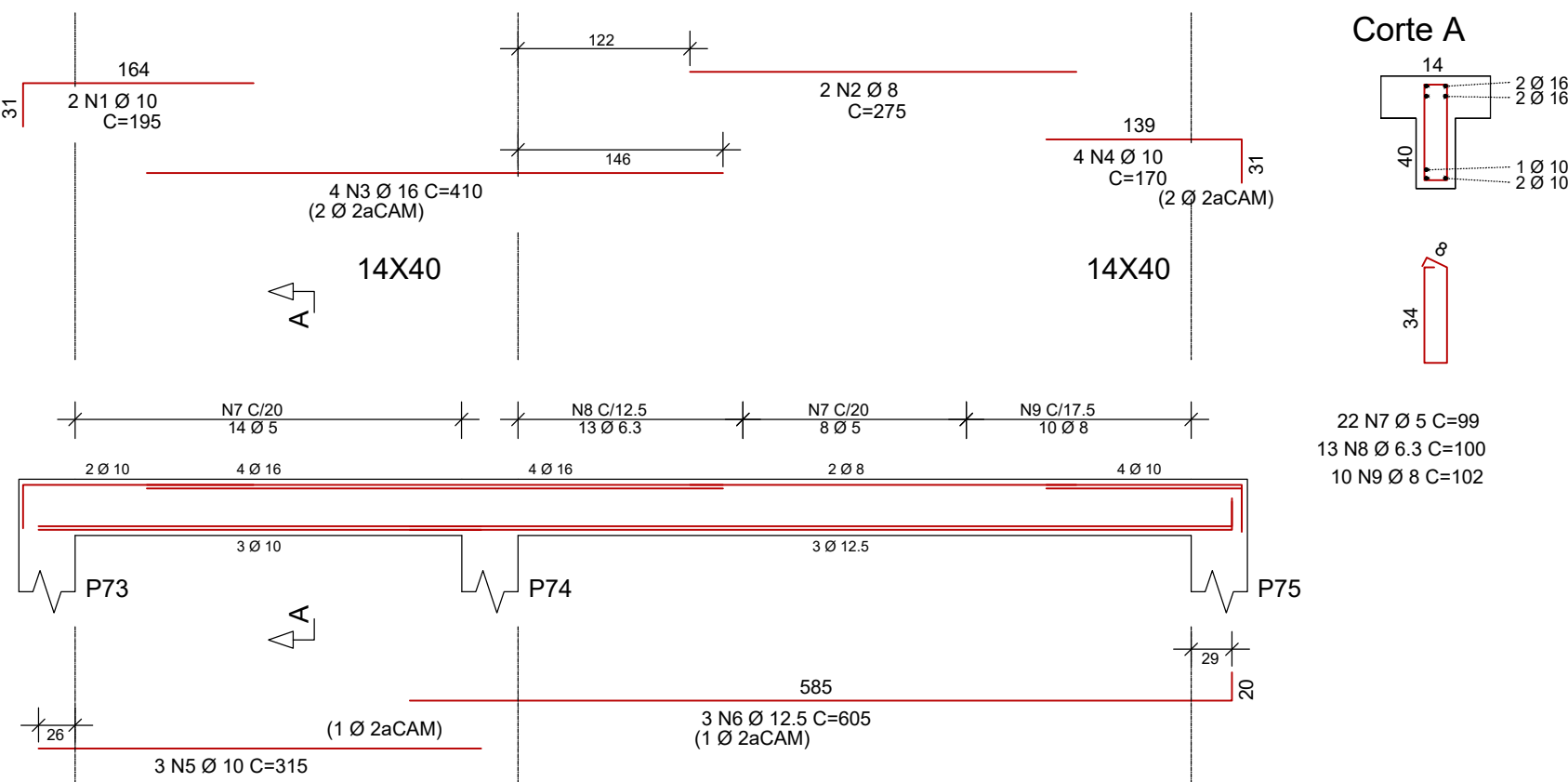
V212



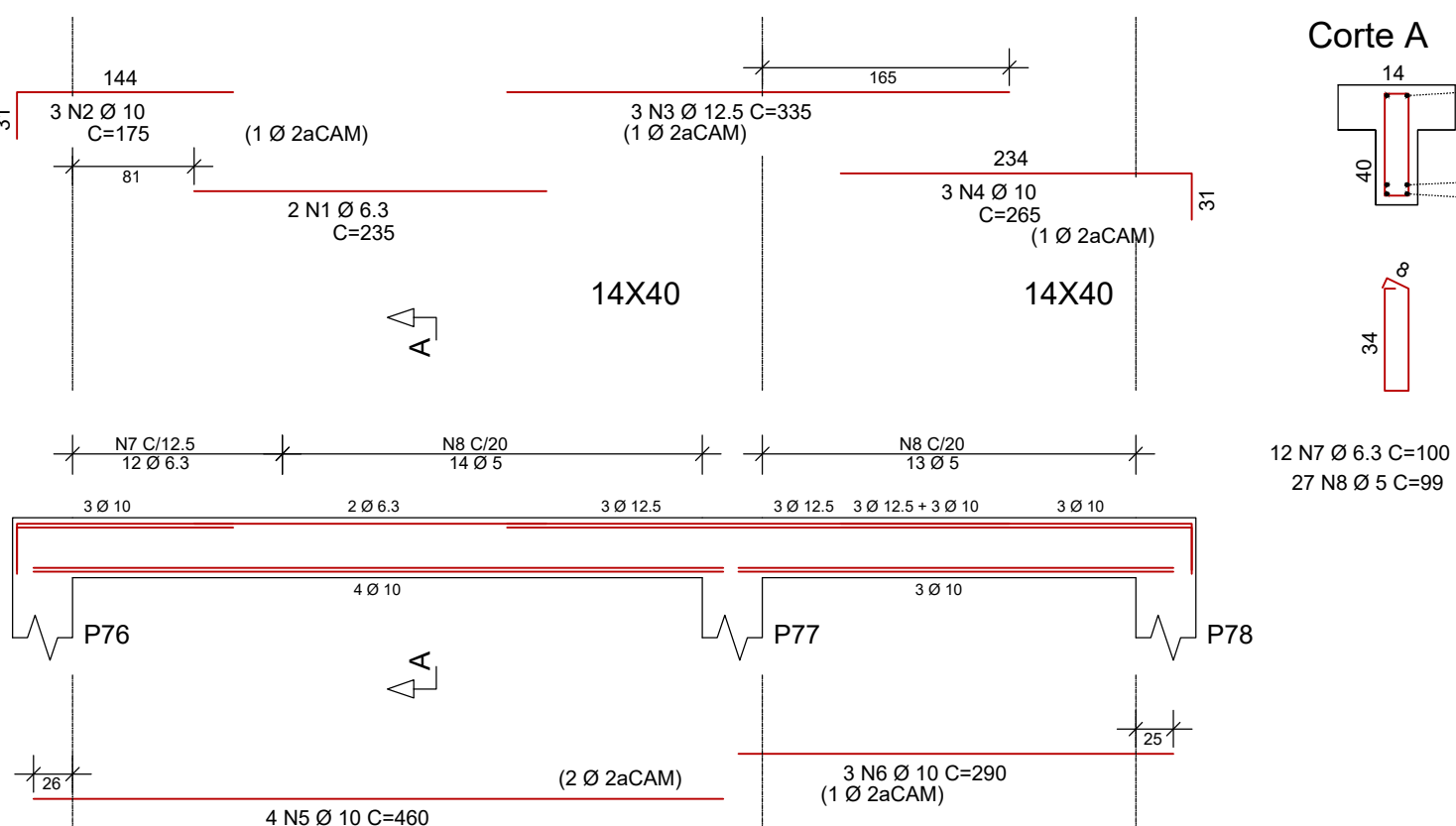
V213



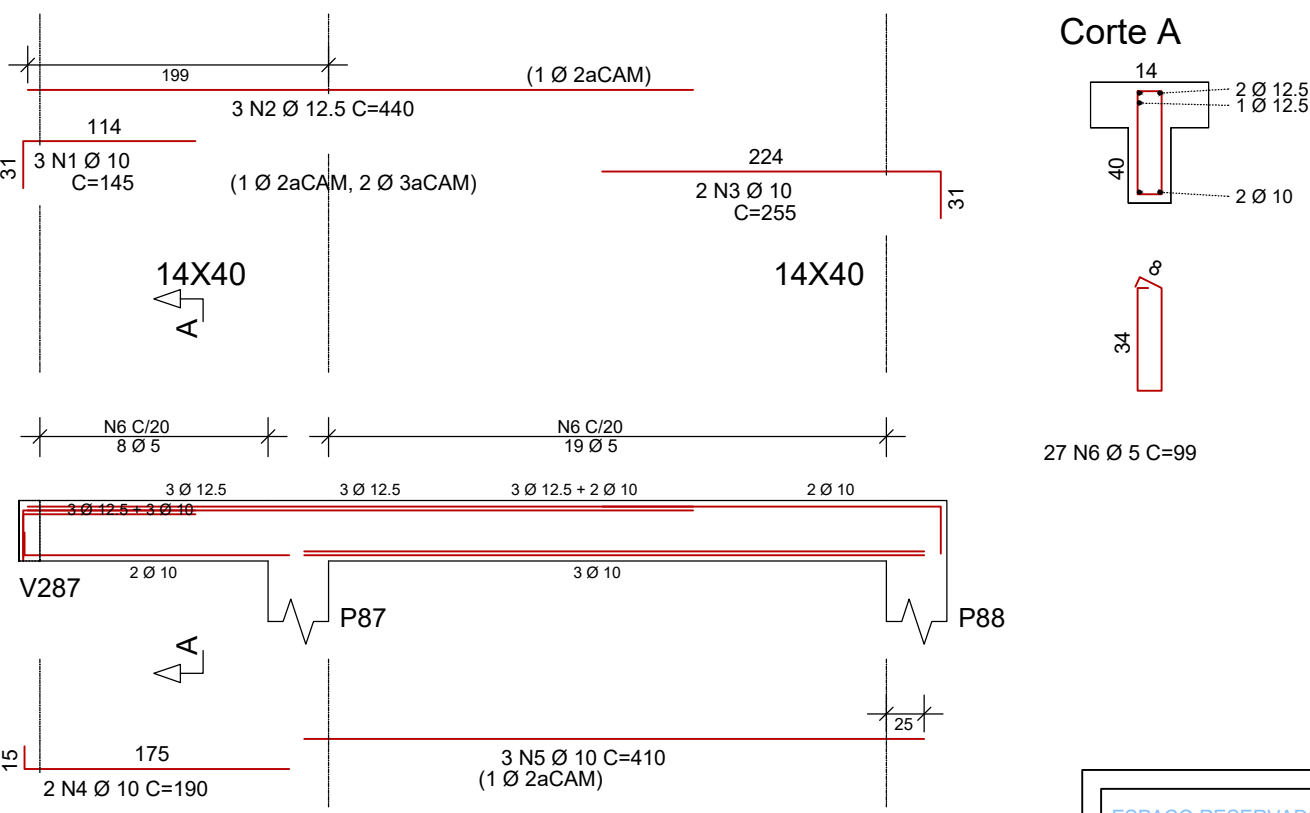
V214



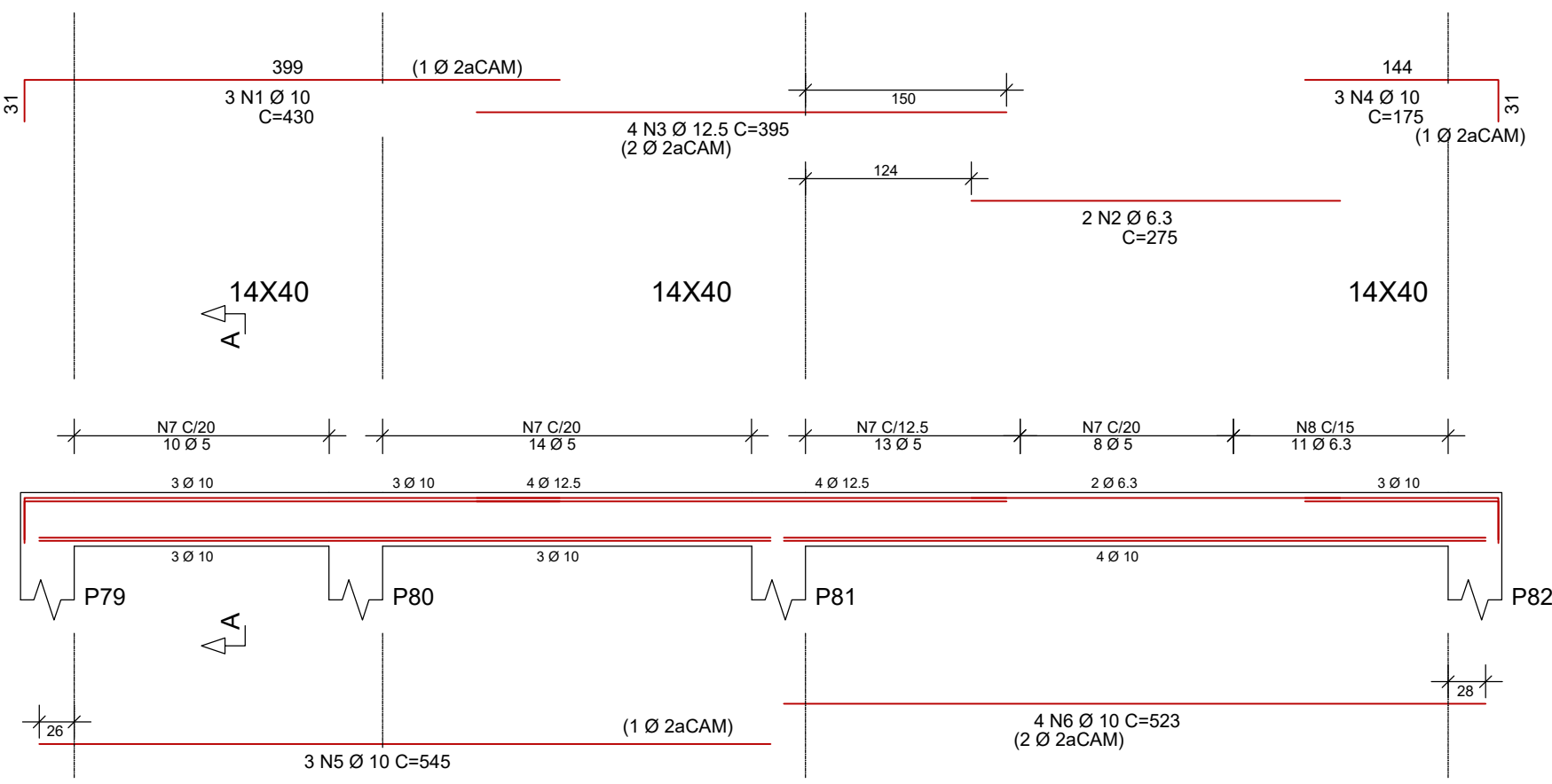
V215



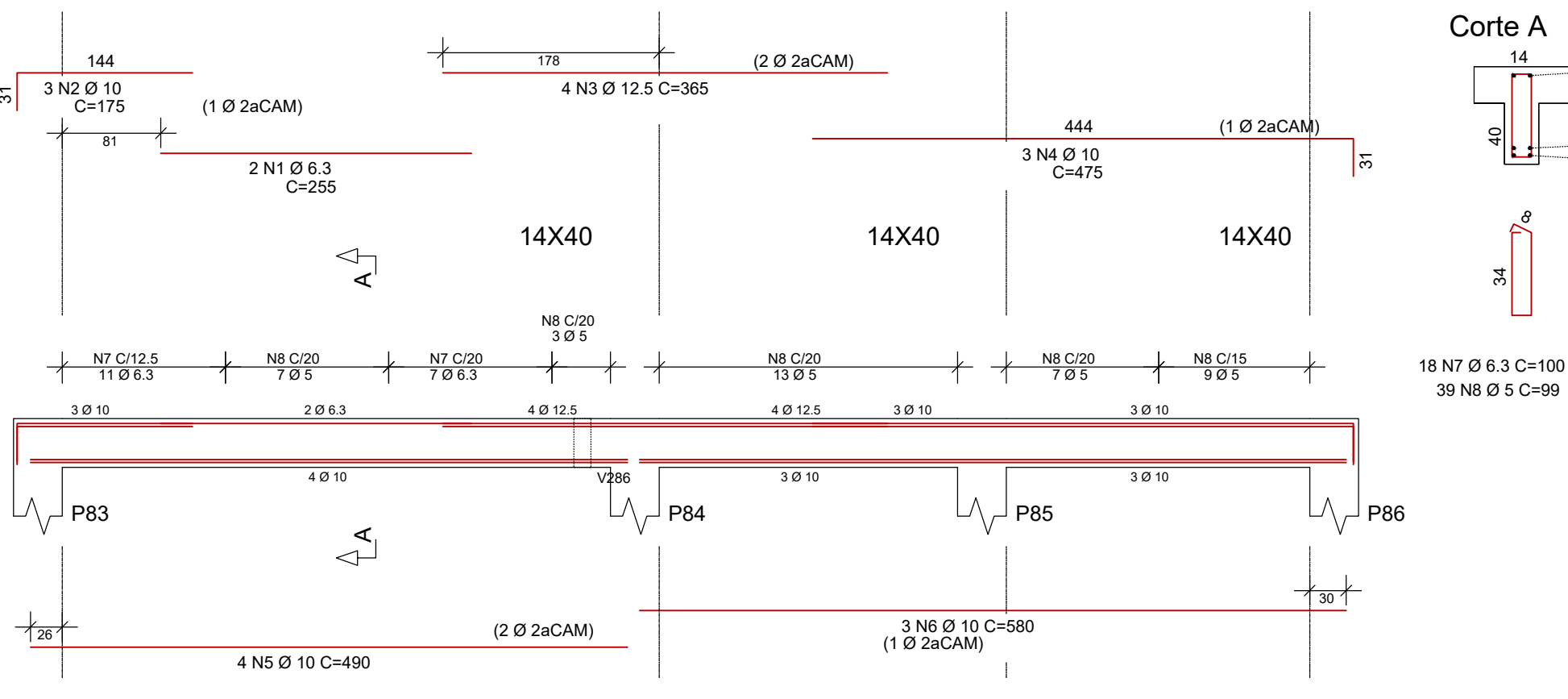
V218



V216



V217



	AÇO	POS	BIT (mm)	QUANT	COMPRIMENTO	
					UNIT	TOTAL
					(cm)	(cm)
V208	60B	1	5	2	270	540
	50A	2	8	4	130	520
	50A	3	10	2	450	900
	60B	4	5	21	99	2079
V209	60B	1	5	2	240	480
	50A	2	10	2	175	350
	50A	3	10	2	425	850
	60B	4	5	2	245	490
	50A	5	10	2	170	340
	50A	6	10	3	1080	3240
V210	60B	7	5	52	99	5148
	60B	1	5	2	270	540
	50A	2	8	4	130	520
	50A	3	10	2	450	900
V211	60B	4	5	21	99	2079
	50A	1	10	2	590	1180
	50A	2	16	3	440	1320
	50A	3	10	3	285	855
V212	50A	4	10	2	650	1300
	50A	5	10	4	435	1740
	60B	6	5	32	99	3168
	50A	7	6.3	15	100	1500
	50A	8	8	9	102	918
	60B	1	5	2	225	450
	50A	2	10	2	175	350
	50A	3	10	3	810	2430
V213	50A	4	10	2	1075	2150
	60B	5	5	48	99	4752
	50A	1	10	2	195	390
	50A	2	8	2	155	310
V214	50A	3	10	3	241	723
	60B	4	5	10	99	990
	50A	1	10	2	195	390
	50A	2	8	2	275	550
V215	50A	3	16	4	410	1640
	50A	4	10	4	170	680
	50A	5	10	3	315	945
	50A	6	12.5	3	605	1815
	60B	7	5	22	99	2178
	50A	8	6.3	13	100	1300
	50A	9	8	10	102	1020
	60B	1	6.3	2	235	470
V216	50A	2	10	3	175	525
	50A	3	12.5	3	335	1005
	50A	4	10	3	265	795
	50A	5	10	4	460	1840
	50A	6	10	3	290	870
	50A	7	6.3	12	100	1200
	60B	8	5	27	99	2673
	50A	1	10	3	430	1290
V217	50A	2	6.3	2	275	550
	50A	3	12.5	4	395	1580
	50A	4	10	3	175	525
	50A	5	10	3	545	1635
	50A	6	10	4	523	2092
	60B	7	5	45	99	4455
	50A	8	6.3	11	100	1100
	50A	1	6.3	2	255	510
V218	50A	2	10	3	175	525
	50A	3	12.5	4	365	1460
	50A	4	10	3	475	1425
	50A	5	10	4	490	1960
	50A	6	10	3	580	1740
	50A	7	6.3	18	100	1800
	60B	8	5	39	99	3861
	50A	1	10	3	145	435
V219	50A	2	12.5	3	440	1320
	50A	3	10	2	255	510
	50A	4	10	2	190	380
	50A	5	10	3	410	1230
	60B	6	5	27	99	2673

RESUMO AÇO CA 50-60			
AÇO	BIT (mm)	COMPR (m)	PESO (kg)
60B	5	366	56
50A	6.3	84	21
50A	8	38	15
50A	10	375	231
50A	12.5	72	69
50A	16	30	47
Peso Total 60B =		56 kg	
Peso Total 50A =		383 kg	

Eixo Faces
Volume de concreto de VIGAS (m³) 4.8 4.3
Taxa de armadura (kg/m³) 91.9 102.3

ESPAÇO RESERVADO PARA PREFEIRURA:

PROJETO:
TERMINAL RODOVIÁRIO DE VÁRZEA GRANDE - MT

CONTRATO:
O.S Nº: 001/2021

Nº: XXXX
DATA:

REVISÃO Nº:
02

DATA:

ESCALA INDICADA:
ESCALA INDICADA NO PROJETO

UNIDADE:
cm

CONTEUDO:
DETALHAMENTO DE VIGAS DA COBERTURA 01

NOME DO CLIENTE:
VÁRZEA GRANDE

ASSINATURA DO CLIENTE:

AUTOR DO PROJETO:

ASSINATURA PROFISSIONAL:

RESPONSÁVEL TÉCNICO DO PROJETO:

ASSINATURA PROFISSIONAL:

RRT PROJETO:
RRT DE EXECUÇÃO:

CONFIGURAÇÃO DE PLOTAGEM:
☐ MODELO PMC
☐ ARQUIVO EM ANEXO:

FRANQUIA:
16/28